

SHINJUKU AREA GUIDE



PARK HYATT TOKYO™



Shinjuku Map

TRAVEL TIPS

1. Train, Buses

In Tokyo, the public transportation system is run by several companies and you need to buy tickets from each company. We recommend purchasing a SUICA/PASMO transportation card at the station. The SUICA card is also available at Park Hyatt Tokyo.



2. Taxi

Taxi drivers usually do not speak English. A red light on the front window indicates that the taxi is vacant. Please get in the car from the left rear door which automatically opens. Please keep the receipt in case you leave anything in the car.

3. Eating

As there is no custom of eating breakfast outside, only chain fast-food restaurant are open early in the morning. Most upscale restaurants are small (with a few seats) and require a booking in advance. Formal restaurants close relatively early. Please contact the restaurant in advance if you wish to cancel your reservation.

Useful Japanese Phrases

- Itadakimasu* (to kick off any meal)
- Oishii desu!* (whenever something is delicious)
- Gochiso sama deshita* (to impress the chef at the end of the meal)

Illustrator: Hiroshi Watatani

Born in 1957, Hiroshi Watatani is a famous Japanese fashion illustrator. He is known to be able to draw the distinction between orthodox and comical illustrations. His fan base consists of those who are interested in his fashion sense and comic humor.

E. Isetan Department Store

One of the trendiest department stores in Japan, the flagship Isetan Shinjuku is renowned for having its window displays created by prominent artists and offering the finest food items, women's fashion and cosmetics. The main building is dedicated to women's fashion, and interior goods, there is a second building dedicated to men's fashion.

F. Kumano Jinja Shrine

The Kumano Jinja Shrine has its headquarters in Wakayama Prefecture and represents 12 famous Shinto Gods. The Kumano Jinja Shrine enshrined in Shinjuku was founded around 1,400 and is best known for the *Yatagarasu*, which is three-legged crow that brings good luck.

G. Tokyo Metropolitan Government Office Building

In 1990, this building complex was designed by Kenzo Tange, the godfather of Japanese architecture. The popular 202-meter high observation decks on the 45th floor are in the Main Building No. 1 (free entry) with a direct elevator from the 1st floor.

H. Busta Shinjuku

Known as the Shinjuku Expressway Bus Terminal, Busta Shinjuku is the main bus and taxi terminal of Shinjuku station, located at the station's new south exit. Airport Limousine buses, Highway buses, taxis, and a local loop bus operate from here for access to destinations throughout Japan. There are also convenience stores, restaurants, cafés and coin lockers to store your luggage. Free Wi-Fi is available.

I. Takashimaya Department Store

This is a full service department store featuring products from high-end fashion to everyday household goods including electronics, interior goods, children's clothing, toys, sportswear and kitchen equipment. The mall includes a Tokyu Hands and a Books Kinokuniya Tokyo which offers a relatively large English selection.

J. Shinjuku Gyoen National Garden

Opened in 1906, this national garden spans across an area of 58ha with three distinct garden styles; Japanese, French and English landscape. Every year in April, the garden is a very popular *hanami* tourist spot where people gather to admire the 1,300 cherry blossoms once they are in bloom.

K. Tokyo Opera City

This tower is the third-tallest building in Shinjuku and seventh-tallest in Tokyo, featuring a concert hall, an art exhibit, restaurants and shops. Various art pieces are on display throughout the complex. On the west side of the building, there is a New National Theater where people can enjoy opera and dance performances.

L. Meiji Jingu Gaien

Meiji Jingu Gaien garden was built in 1926 and is currently under construction to become the new national stadium. The stadium is set to be completed in time for the 2020 Olympics and Paralympics and will be used for both the opening and closing ceremonies. The museum there called Seitoku Kinen Kaigakan, as well as the surrounding streets aligned with ginkgo trees are both a popular attraction.

M. Tokyo Camii

This is the largest mosque of Ottoman Turkish design in Tokyo and is adjoined with the Turkish Culture Center. The interior of the mosque features beautiful stained glass and calligraphy. When visiting, please be mindful of the dress code and wear appropriate clothing attire.

N. Yoyogi Hachimangu Shrine

This Shinto shrine is dedicated to the Hachiman God, God of war and battle, who protects people from bad luck and ensures a prosperous future. Presently it protects worshippers for safe childbearing, home safety and transportation safety. There is also a smaller shrine called *Shusse Inari*, which is famous for being a power spot that brings good luck for work and career.

O. Meiji Jingu Gyoen

The garden was named Yoyogi Gyoen in the Meiji Period when the ownership was transferred to the Meiji Emperor family, who then opened it to the public. Many people visit the garden in June to see the bloom of the Japanese Iris flower. There is also a well, built by samurai Kato Kiyomasa in the early Edo period, which is known to be a power spot.

P. La Foret Harajuku

This landmark shopping building in Harajuku is popular amongst young shoppers, especially women. For years it has been the leader in contemporary and unique fashion, culture and art. Exhibitions and media events take place here to promote these trends.

Q. Omotesando Hills

Opened in 2006, Omotesando Hills is located in the heart of the shopping area famous for luxury brand boutiques. This shopping complex consists of high-fashion shops, trendy cafés, bars and restaurants. It was built by the award-winning Japanese architect, Tadao Ando, who is a Pritzker Prize recipient.

TOURIST ATTRACTIONS

A. Shinjuku Station

The world's busiest train station with about 3.5 million commuters a day, connected to JR (Japan Railways), the private lines; Odakyu and Keio, and the Tokyo Metro lines and only a 12 minute walk to Park Hyatt Tokyo.

B. Samurai Museum

The samurai has been an iconic symbol of courage, power and masculinity for over 700 years of Japanese warfare history. This museum exhibits armor, helmets and swords of the upper-class samurai who protected the noble class. You can dress up in samurai gear, witness battle scenes played by actors at the museum, as well as purchase a range of samurai merchandise goods.

C. Hanazono Jinja Shrine

This shrine was founded around the 16th century and is the main Shinto shrine that protects the Shinjuku district. People visit for good marital relations, childbearing, to ensure romantic relationships and it is known to be a power spot for good luck. The shrine regularly has events which are worth a visit. In November the famous *Tori no Ichi* festival takes place, which is known to be the day of good luck and fortune.

D. Bicqlo

This store is a merging of two of Japan's major retail giants; home electronics Bic Camera and casual, fast fashion pioneer Uniqlo. The low cost, affordable fashion brand GU of Uniqlo is also featured.

The store is connected to the Shinjuku San-Chome station at exit A5.

1. Kanda River Area

Along the north-west side of Park Hyatt Tokyo, the path along the Kanda River flows into a quiet residential area and is recommended as a walking and running course. From late March to early April, cherry blossoms along the river are in bloom and you can enjoy *hanami*.

Walk: Approximately 15 minutes from Park Hyatt Tokyo.

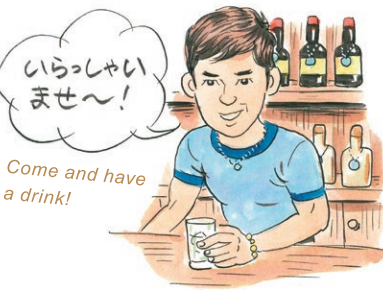


Go for a run off the beaten path around Kanda River with beautiful cherry blossoms in spring.

2. Shin-Okubo

The area in Tokyo where you can purchase various food items and products from Korea, China, India, Thailand and other Asian countries as well as find a range of ethnic restaurants serving authentic cuisine. In Islamic Alley, Halal products can be purchased.

Train: Right by the JR Shin-Okubo station.
Taxi: Approximately 12 minutes from Park Hyatt Tokyo.



Come and have a drink!

This will make for a souvenir.



9. Shinjuku Ni-Chome

Located on the east side of Shinjuku San-Chome station, Shinjuku Ni-Chome is known as the LGBT area of Tokyo, home to many LGBT bars, clubs and eateries. It can get very crowded on weekend nights. There are many establishments that are membership-only or have strict entry restrictions so it is best to research beforehand.

Train: Approximately 1 minute from Shinjuku San-Chome station on the Toei Shinjuku Line.
Taxi: Approximately 8 minutes from Park Hyatt Tokyo.



13. Hatagaya

If you walk further down Fudo-dori street, you will reach the Hatagaya area. On the northern side of Hatagaya station is the Rokugo-dori shopping street, which is crowded with popular taverns and restaurants. On the south side of Hatagaya is a quiet residential area. Eating and drinking establishments are scattered along the Nishihara shopping street leading towards the Yoyogi-Uehara area.

Walk: Approximately 20 minutes from Park Hyatt Tokyo.
Train: Right by the Hatagaya station on the Keio New Line.
Taxi: Approximately 5 minutes from Park Hyatt Tokyo.

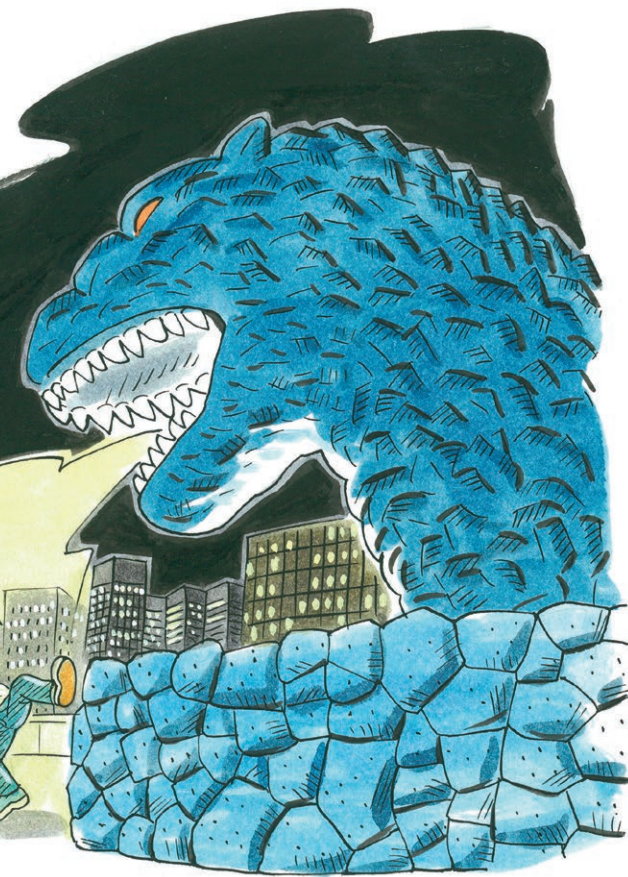


This is a Shine Muscat cocktail

14. Yoyogi-Uehara

This area is a more upmarket district for the sophisticated visitor. You will find organic vegetable-based dishes and organic wines at most of the cafés and bistros in this area. Yakitori shops and Chinese restaurants are more high-end in this neighborhood. The Islamic temple of Tokyo Camii is situated close by.

Train: Right by the Yoyogi-Uehara station on the Odakyu Line.
Taxi: Approximately 10 minutes from Park Hyatt Tokyo.



3. Kabukicho

Kabukicho is the red light district of Tokyo and is the most famous downtown area of Tokyo. Here you will find a variety of Japanese establishments including izakayas, karaoke boxes, numerous bars and nightclubs that are open all hours of the day and night. You can also spot the giant Godzilla in this area on the rooftop of Hotel Gracery. The Samurai Museum and The Robot Restaurant are also located here.

Train: 5 minute walk from JR Shinjuku station.
Approximately 8 minutes from Shinjuku San-Chome station on the Toei Shinjuku Line.
Taxi: Approximately 9 minutes from Park Hyatt Tokyo.



6. Omoide Yokochō (Memory Lane)

This lane is right by the West exit of Shinjuku station and is full of small restaurants. From the post-war era, many small establishments here served grilled beef and pork offal. Presently there are still many eateries that serve yakitori (grilled chicken skewers) and motsuyaki (grilled innards). There are also many yakisoba (fried noodles) and gyoza (dumplings) restaurants, ticket vendors and currency exchange shops.

Train: 2 minute walk from JR Shinjuku station.
Approximately 7 minutes from Shinjuku station on the Toei Shinjuku Line.
Taxi: Approximately 5 minutes from Park Hyatt Tokyo.



4. Golden Gai

A small area in Shinjuku that is famous for being a lively nightlife spot. Golden Gai consists of 6 connecting alleys packed with over 200 small bars and restaurants. Previously this area was popular with Japanese novelists and movie directors. However, more recently it has become a hotspot for foreign visitors.

Train: 6 minute walk from JR Shinjuku station. Approximately 7 minutes from Shinjuku San-Chome station on the Toei Shinjuku Line.
Taxi: Approximately 10 minutes from Park Hyatt Tokyo.



10. Yotsuya San-Chome

This is the area in between Yotsuya station and Akebonobashi station where you will find long-established bars and small restaurants along many narrow streets. Arakicho is also located in this area, which used to be a red-light district. It is very pleasant to stroll and dine here as you will experience an authentic Tokyo downtown environment. If you are lucky, you may run into a traditional Japanese street musicians.

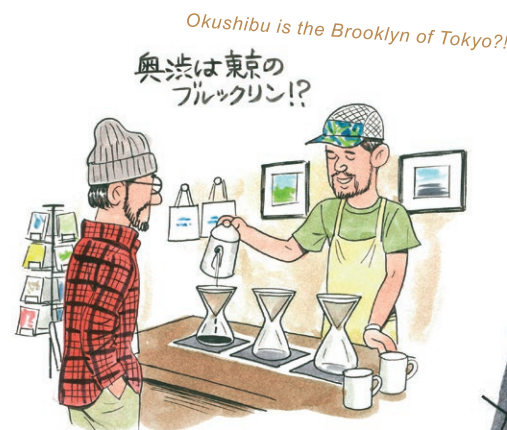
Train: Approximately 3 minutes from Akebonobashi station on the Toei Shinjuku Line.
Taxi: Approximately 10 minutes from Park Hyatt Tokyo.



15. Tomigaya and Oku-Shibuya

Located in the south-west of Meiji Jingu Gyoen, Tomigaya is an area where many fashion brand offices, bars and eateries are scattered around. If you head further south, you will arrive at the back of the so-called 'Okushibu (Deep Shibuya)' district. This is an ideal place to stroll around and window-shop as there are many unique boutiques.

Train: 4 minute walk from Yoyogi-Hachiman station on the Odakyu Line.
Taxi: Approximately 8 minutes from Park Hyatt Tokyo.



5. Otakibashi-dori street Area

Otakibashi-dori street area extends from the north side of Shinjuku station and features many popular chain eateries, ramen shops and fast food restaurants. Walk along the Otakibashi-dori lane to avoid getting lost.

Train: 3 minute walk from JR Shinjuku station.
Approximately 8 minutes from Shinjuku station on the Toei Shinjuku Line.
Taxi: Approximately 5 minutes from Park Hyatt Tokyo.



7. Shinjuku East Gate

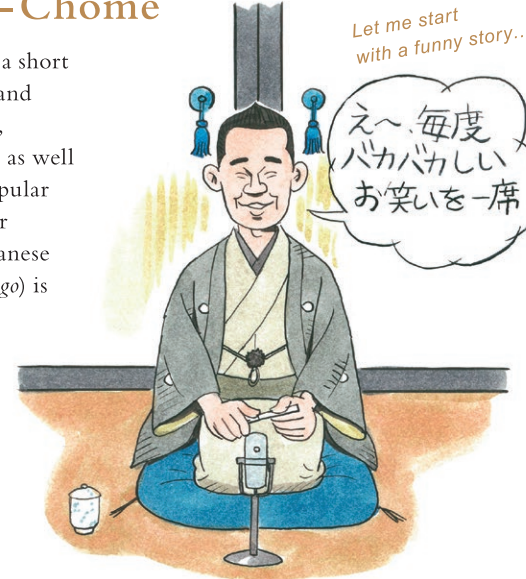
This area is full of various shopping establishments such as Bicqlo, the combined casual clothing Uniqlo shop and Bic Camera home electronic shop, the large department stores; Isetan and Marui, as well as specialty shops for anime and sporting goods.

Train: 1 minute walk from JR Shinjuku station. Approximately 5 minutes from Shinjuku San-Chome station on the Toei Shinjuku Line.
Taxi: Approximately 8 minutes from Park Hyatt Tokyo.

8. Shinjuku San-Chome

Shinjuku San-Chome station is a short distance from Shinjuku station and hosts many Japanese restaurants, bistros, izakaya restaurants, bars as well as standing bars. This area is popular amongst both older and younger people. Also, Suehiro Tei, a Japanese vaudeville performance (or *rakugo*) is regularly performed here.

Train: Right by the Shinjuku San-Chome station on the Toei Shinjuku Line.
Taxi: Approximately 8 minutes from Park Hyatt Tokyo.



11. Shinjuku West Gate

At the west gate of Shinjuku station, there are large-scale electronic establishments as well as used electronic shops and PC-related stores. There are many eateries and izakayas in this area as well. You can also see the Tokyo Metropolitan Government Office Building that is a short distance from the station.

Walk: Approximately 10 minutes from Park Hyatt Tokyo.

Our best-selling rice cooker, you can cook rice to perfection.



12. Fudo-dori street

If you are looking to experience the local atmosphere, Fudo-dori street is only a short walk away, located west of Park Hyatt Tokyo. This shopping street is 700 meters long and full of everyday goods stores. There are grocery stores, Japanese delicacy stores, as well as many eateries and taverns where locals gather.

Walk: Approximately 6 minutes from Park Hyatt Tokyo.



16. Harajuku

The most popular, vibrant fashion and shopping district in Japan, known for *kawaii* culture and trends for the younger generation is just 10 minutes by car from Park Hyatt Tokyo. The most famous shopping spots are Cute Cube on Takeshita Street, the famous shopping mall, La Foret and Cat Street which offers more of a diverse shopping experience for fashionistas.

Train: 3 minute walk from JR Harajuku station.
Right by the Meiji-Jingumae station on the Tokyo Metro lines.
Taxi: Approximately 10 minutes from Park Hyatt Tokyo.



17. Omotesando

The Champs-Élysées of Tokyo, Omotesando is a fashionable tree-lined shopping boulevard with world-renowned architecture in the south-east area of Harajuku. This area caters more to the haute-couture and high-end fashionista. Shoppers here have access to almost all of the world top brands. The famous shopping mall, Omotesando Hills is a very popular destination.

Train: 2 minute walk from Meiji-Jingumae station on the Tokyo Metro lines.
Taxi: Approximately 12 minutes from Park Hyatt Tokyo.